








ACTIVESOL

make use of natural power

SEMI-FLEXIBLE PHOTOVOLTAIC PANELS

GREEN STANDARD SERIES

-  THE BEST PRICE-QUALITY RELATIONSHIP
-  VERY LIGHT AND DURABLE
-  RECOMMENDED FOR LAND VEHICLES (CAMPERS, CARAVANS, BUSES)
-  EASY AND FAST INSTALLATION USING TAPE/GLUE/SCREWS
-  ADJUSTS TO SLIGHTLY CURVED SURFACES



XDISC S.A.
ul. Heliotropów 45/53, 04-796 Warsaw, POLAND
VAT PL 113-245-06-05

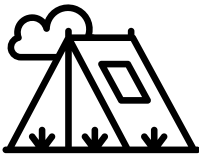
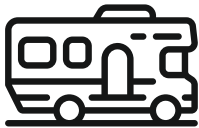
www.activesol.energy / www.x-discgroup.pl
e-mail: contact@activesol.energy
tel. +48 691 114 118



ACTIVESOL

semi-flexible photovoltaic modules

GREEN STANDARD



GRS-110M-WA

GRS-155M-WA

ELECTRICAL PARAMETERS

Peak Power [Pmax]	107 Wp	155 Wp
Max. Power Voltage	22,89 V	16,65 V
Max Power Current	4,67 A	9,34 A
Open Circuit Voltage	28,34 V	20,61 V
Short Circuit Current	4,93 A	9,87 A
Module Efficiency	15,90%	16,60%
Power output tolerance	+/- 5%	+/- 5%
Values presented for STC (Standard test conditions): incident sunlight 1000 W/m2, solar cell temperature 25 °C, AM1.5		
Max system voltage	250 V DC	250 V DC
Max Series Fuse Rating	12A	12A

TEMPERATURE COEFFICIENTS

Isc	0,06 %/K	0,06 %/K
Voc	-0,36 %/K	-0,36 %/K
Pmax	-0,34 %/K	-0,34 %/K

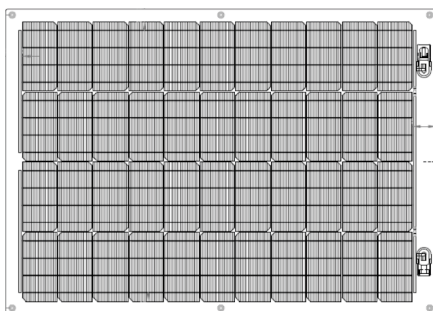
GENERAL INFORMATION

Cell type	1/2 monocrystalline	monocrystalline
Junction Box *1	MC4 Plug&Play type	MC4 Plug&Play type
Module thickness	2 mm	2 mm
Junction Box Thickness	15 mm	15 mm
Weight	1,8 kg	2,5 kg
Dimensions *1	975 x 690 mm	1360 x 690 mm
Bending Radius	5 m	5 m
Anti-slippery surface/walkable	no/no	no/no
Frontsheet *1	glossy finish	glossy finish
Backsheet *2	white	white
Operating module temperature:	-40 to +85 °C	-40 to +85 °C
Recommended use	mobile & inland: RVs, motorhomes, campervans, riverboats, tents, light rooftops, advertising carriers etc.	
Approximate daily productivity *3	455 Wh	659 Wh
LED light	48 h	66 h
Laptop	7 h	10 h
60 liter fridge	6 h	8 h
40" TV	6 h	9 h

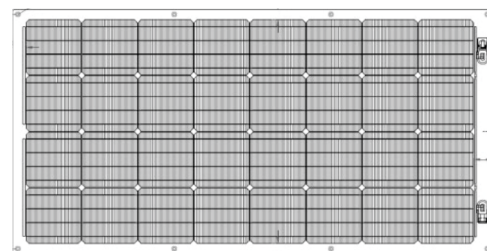
*1 Can be customized on demand (custom-made offer).

*2 White/black/transparent available (custom-made offer).

*3 Evaluation based on climate of south Italy with panels flat mounted, typical summer (PVGIS-SARAH2 model).



GRS-110M-WA



GRS-155M-WA